

EHWA
SINCE 1975

WEAR PARTS



EHWA DIAMOND



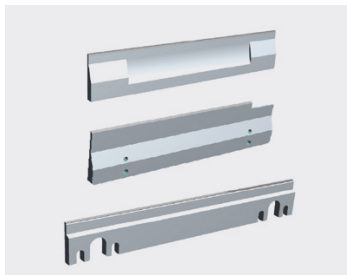
*PCD, PCBN, TUNGSTEN
CARBIDES, CERAMICS*

WEAR PARTS

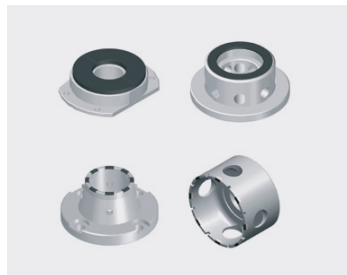
Longer tool life thanks to excellent wear resistance
Customized solutions for all applications

APPLICATIONS

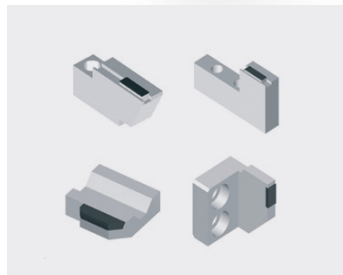
- Centerless grinding machines
- Cylindrical grinding machines
- Measuring probes
- Bearing manufacturing
- Various machines



Centerless blades
for centerless grinding



Sliding shoes & Vblocks
work-rest parts



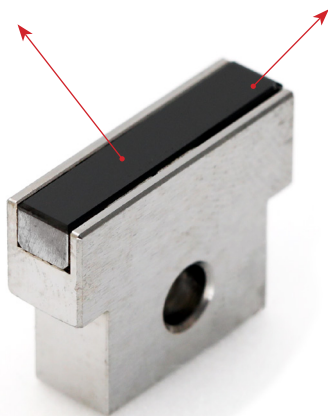
Backing plates
for bearing manufacturing



Gauges
measuring probes

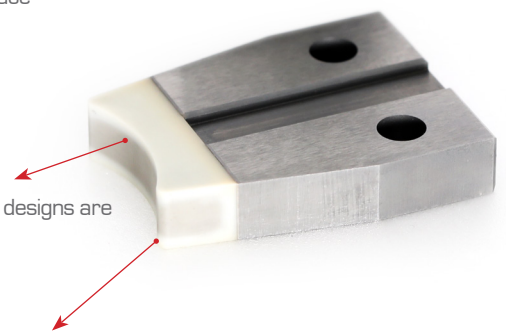
Outstanding wear resistant PCD enables a significantly longer tool life

Friction can be minimized by polishing PCD surface to a minimum Ra value of 0.02.



Customized, precise designs are available on request

Ceramic exhibits exceptional chemical resistance, effectively preventing chemical wear and surface scratches on the workpieces



EHWA DIAMOND IND. CO. LTD.

374, Nambudae-ro, Osan-city, Gyeonggi-Do, 18145, Korea.

<http://www.ehwadia.com> / e-mail: bkkim@ehwadia.co.kr / Tel : +82-(31) 370-9220 / Fax : +82-(31) 370-9840

