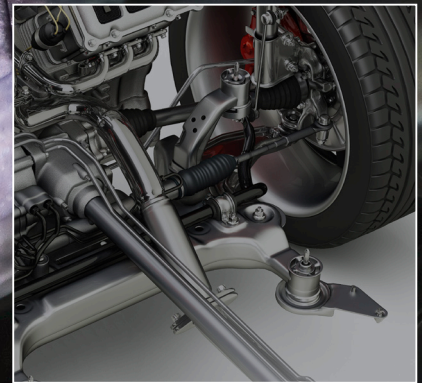
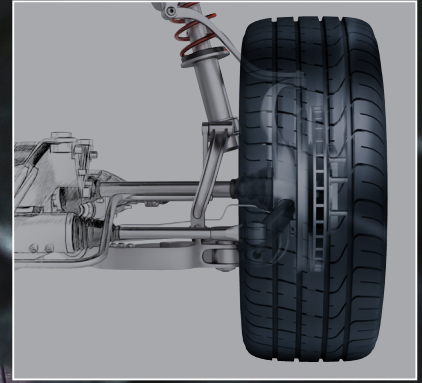


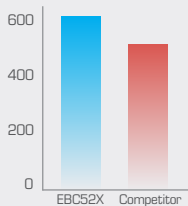
EBC52X NEW GRADE FOR CV-JOINT



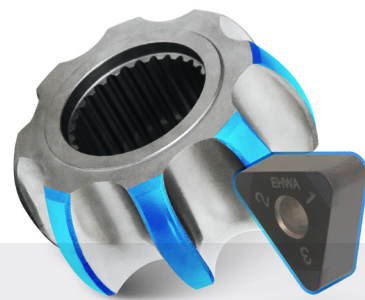
EBC52X is a high-content PCBN grade newly developed for continuous and interrupted cutting of CV-joint heat-treated steel. It delivers exceptional performance in continuous and interrupted cutting of CV-joint components. It also maintains outstanding performances even under harsh machining condition.



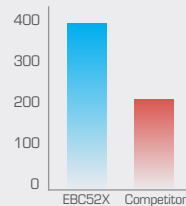
Outer Race Turning



Workpiece : forged steel
Cutting speed : 120 m/min
Feed rate : 0.1~0.12 mm/rev
D.O.C (ap) : 0.10~0.20 mm
Coolant : dry
Interrupt



Inner Race Turning



Workpiece : forged steel
Cutting speed : 200 m/min
Feed rate : 0.20 mm/rev
D.O.C (ap) : 0.09~ 0.15 mm
Coolant : dry
Interrupt