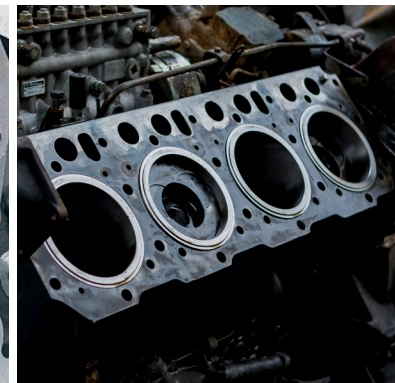
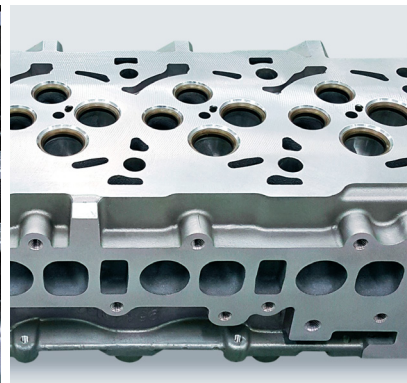
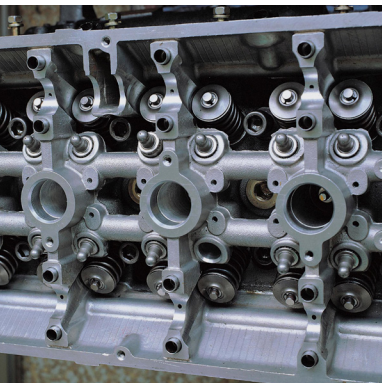
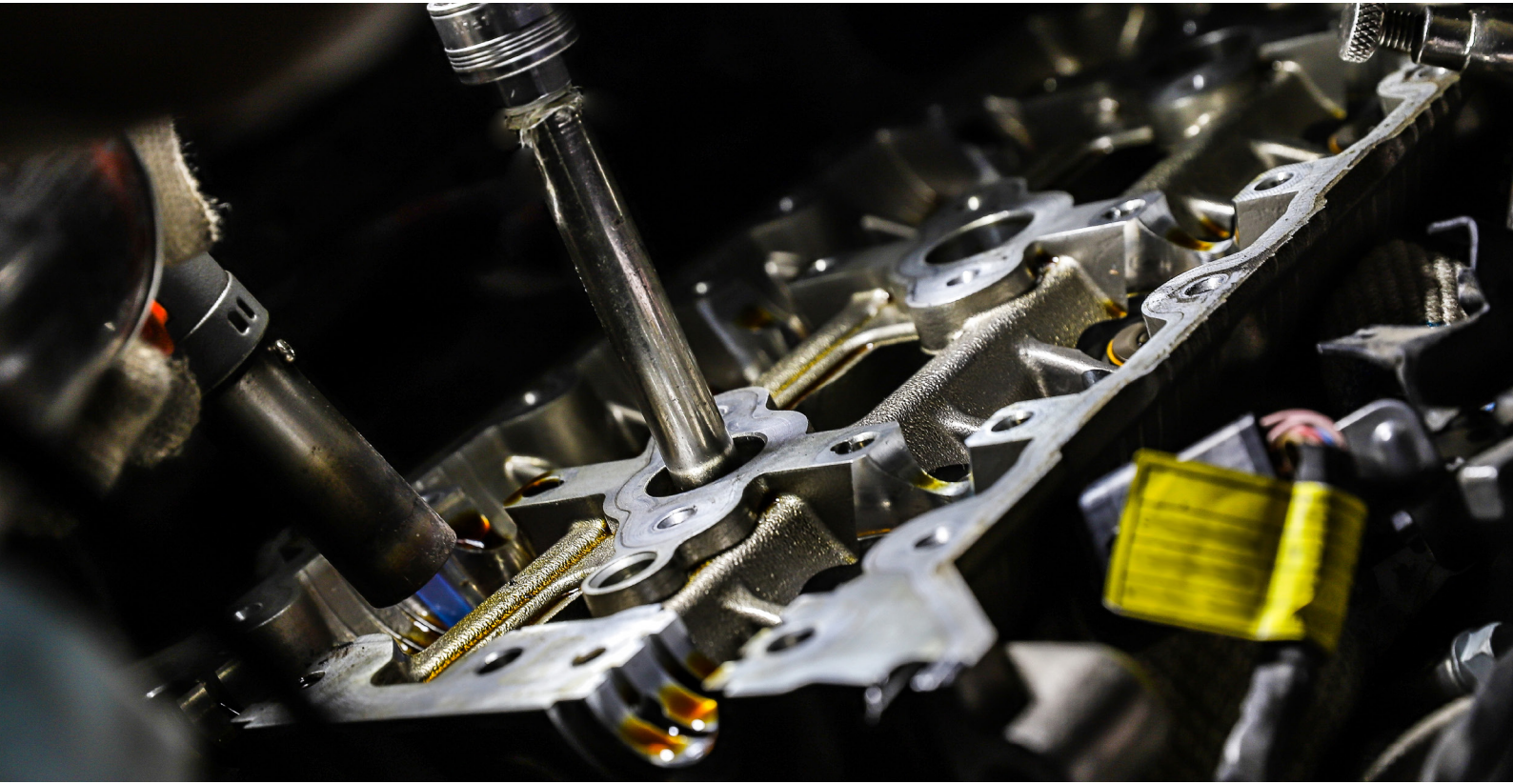


EHWA
SINCE 1975

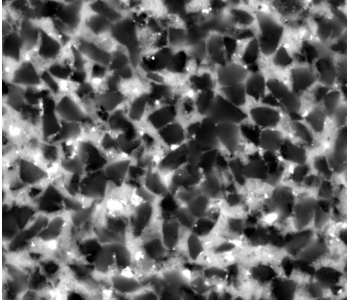
EB150 FOR VALVE SEATRING



EHWA DIAMOND

EHWA DIAMOND TOOLS

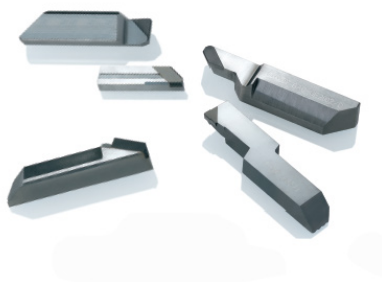
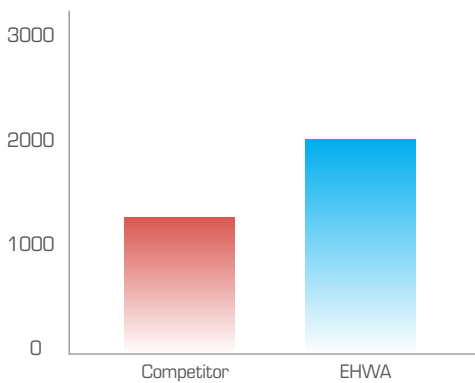
EB150 FOR CYLINDER HEAD VALVE SEAT



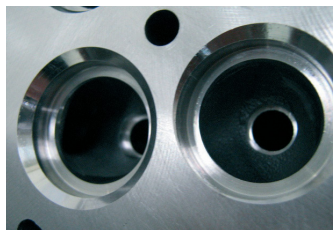
EB150 is a PCBN grade specifically developed for machining valve seat rings in engine cylinder heads. Its TiN-based ceramic binder and premium CBN grits extend tool life by resisting impact and wear in valve seats machining, while also finishing an excellent surface finish.

Engineered to endure hardness variations of sintered alloys, EB150 demonstrates exceptional performance in high output engines.

| Grade | Grit Size | CBN Vol. | Application | |
|-------|-----------|----------|-------------------------|---------------------------|
| EB150 | 2~3μm | 60% | P/M (High Alloyed) | Hardened Steel (HRC > 45) |
| | | | Valve Seat Ring (B 45°) | H15~H25 |



- Operation : exhaust valve seat
- Grade : PCBN EB150
- Cutting speed : 1500 rpm
- Feed rate : 0.05mm / tooth
- Coolant : wet
- Result : 2400 holes



EHWA DIAMOND IND. CO. LTD.

374, Nambudae-ro, Osan-city, Gyeonggi-Do, 18145, Korea.

<http://www.ehwadia.com> / e-mail: bkkim@ehwadia.co.kr / Tel : +82-(31) 370-9220 / Fax : +82-(31) 370-9840

