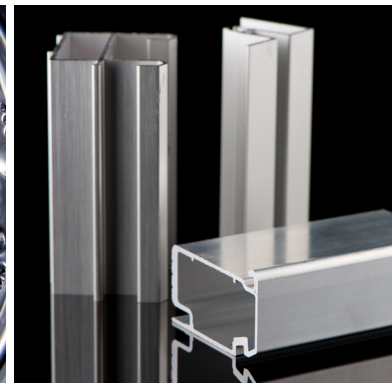
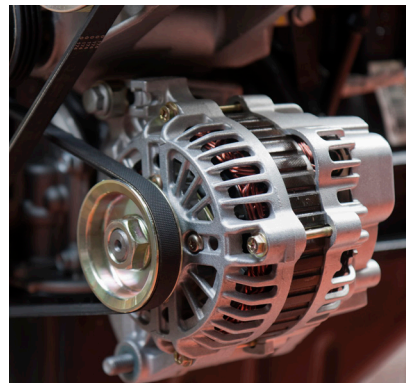
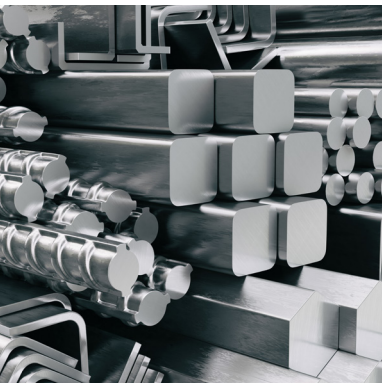


EHWA
SINCE 1975

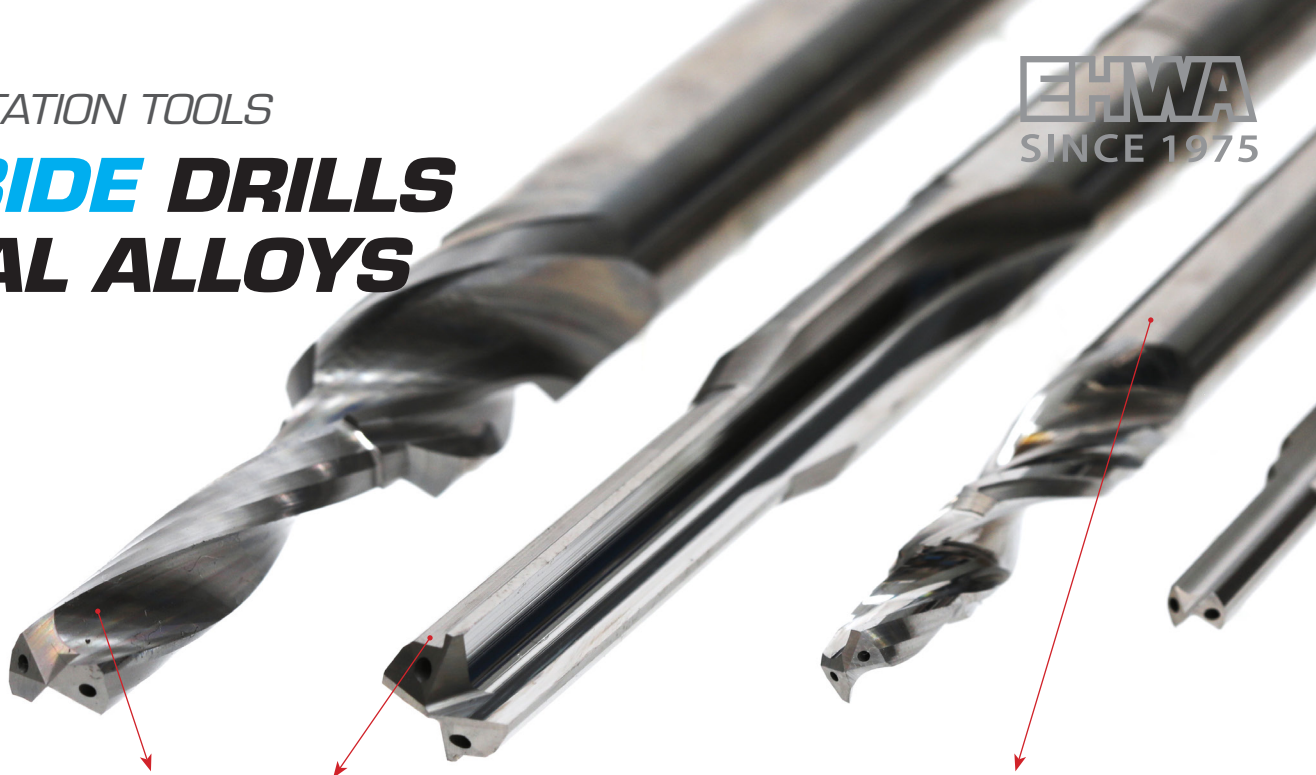
CARBIDE DRILLS FOR AL ALLOYS



**NEW
PRODUCT**

EHWA DIAMOND

CARBIDE DRILLS FOR AL ALLOYS



Helix Type / Burnishing Type

Mirror Finish Lower than Rz 0.4 :

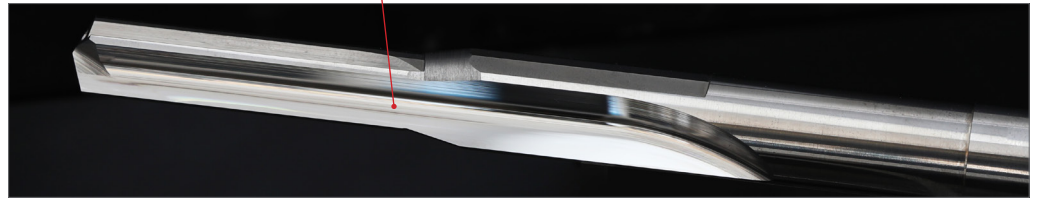
- Prevent built up edge
- Maximize fluent chip flow

ET110 :

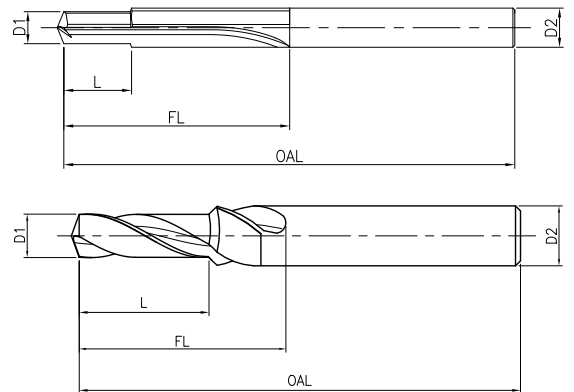
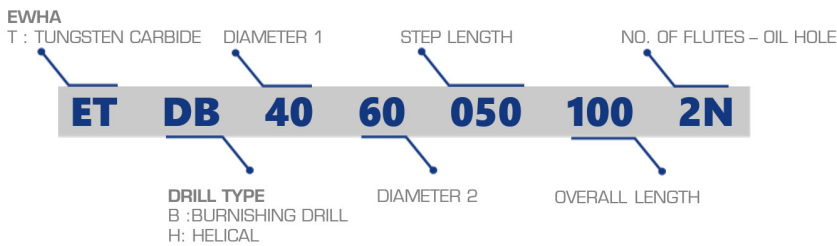
Suitable carbide for super polishing drills

ET110

- Fine carbide material with polished surface



EHWA Drill Code



EHWA SOLID CARBIDE DRILL

ITEM CODE	D1	D2	L	FL	OAL
ETDB 43 60 025 080 2N	4.3	6.0	25	40	80
ETDB 51 80 025 080 2N	5.1	8.0	25	40	80
ETDB 69 100 030 100 2N	6.9	10.0	30	50	100
ETDB 86 120 035 105 2N	8.6	12.0	35	55	105
ETDB 104 140 040 110 2N	10.4	14.0	40	60	110
ETDB 140 160 040 110 2N	14.0	16.0	40	60	110



EHWA DIAMOND IND. CO. LTD.

374, Nambudae-ro, Osan-city, Gyeonggi-Do, 18145, Korea.

<http://www.ehwadia.com> / e-mail: bkkim@ehwadia.co.kr / Tel : +82-(31) 370-9220 / Fax : +82-(31) 370-9840

