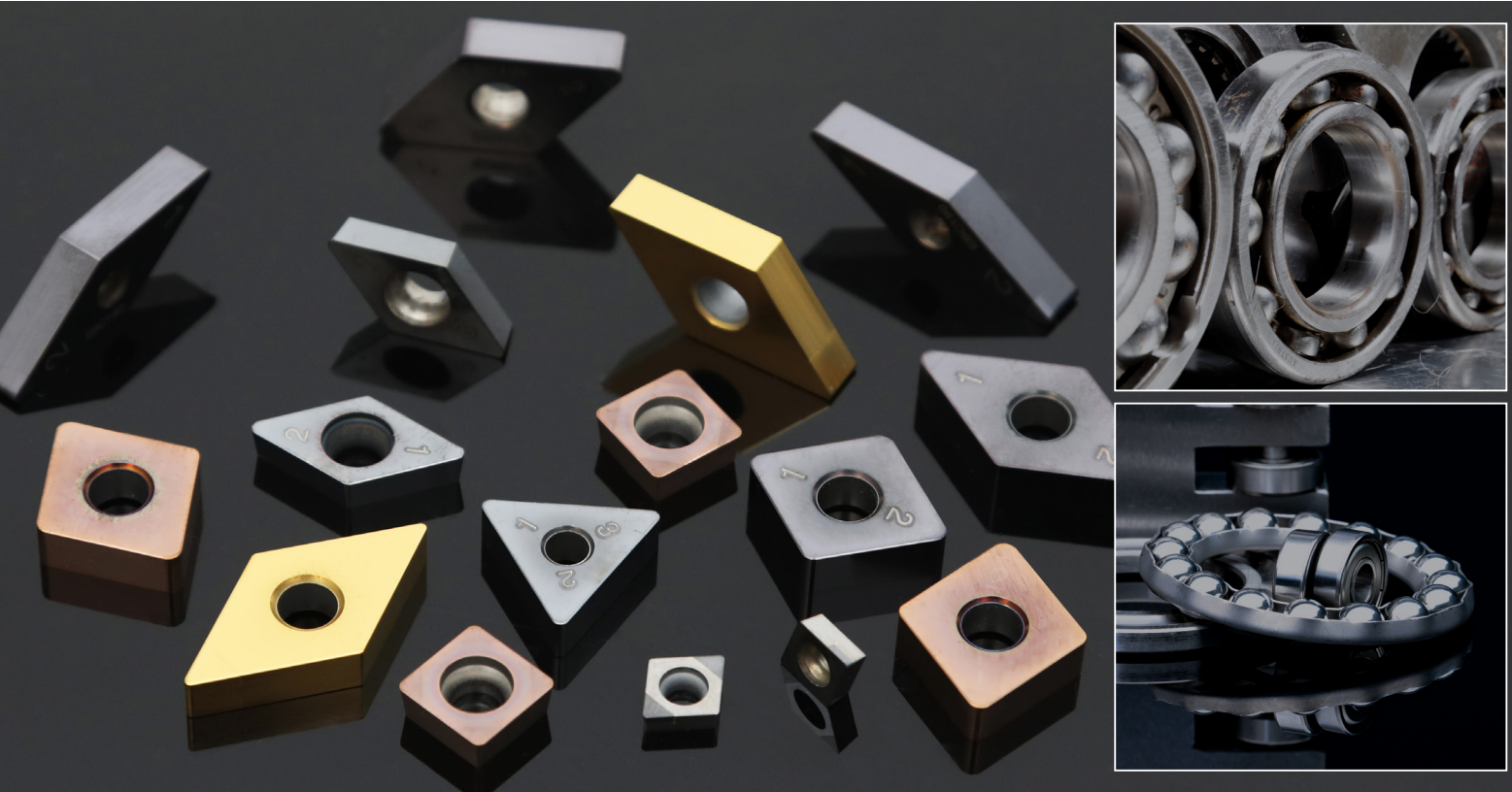
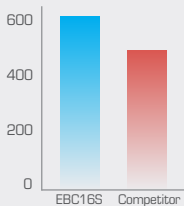
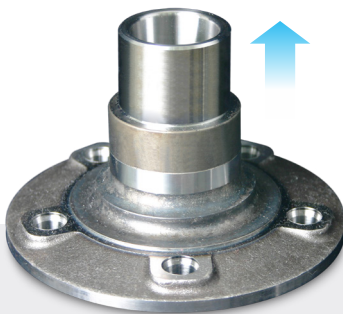


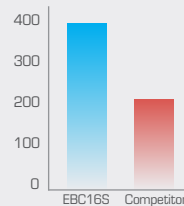
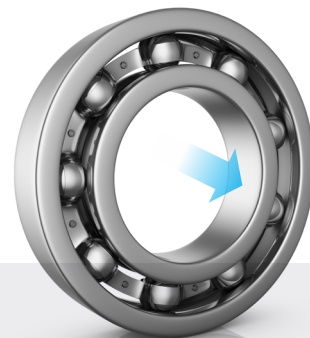
EBC16S NEW COATED GRADE FOR BEARING STEEL



EBC16S is a low-content PCBN grade newly developed for continuous cutting of bearing steel. It delivers exceptional performance when machining bearing steel such as SUJ2 and 100Cr6. It also maintains outstanding performances even under harsh machining condition.



Workpiece : SUJ2
Cutting speed : 220 m/min
Feed rate : 0.15~0.22 mm/rev
D.O.C (ap) : 0.10~0.20 mm
Coolant : wet
Continuous



Workpiece : SUJ2
Cutting speed : 200 m/min
Feed rate : 0.20 mm/rev
D.O.C (ap) : 0.10~0.15 mm
Coolant : wet
Continuous