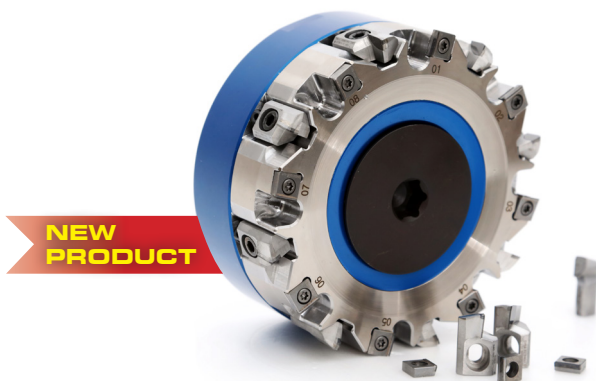
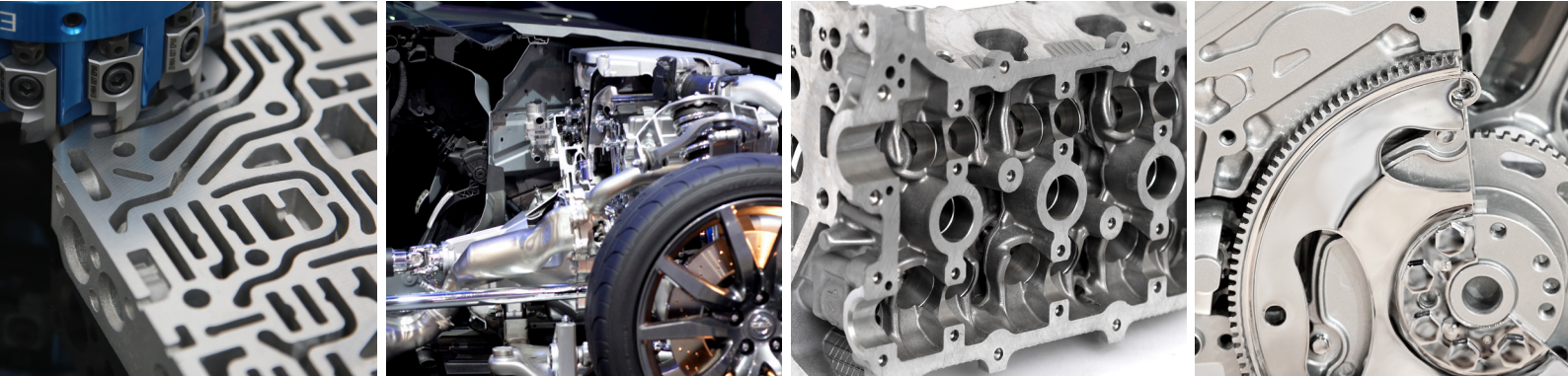


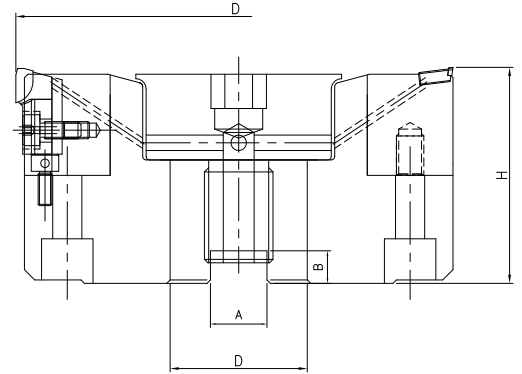
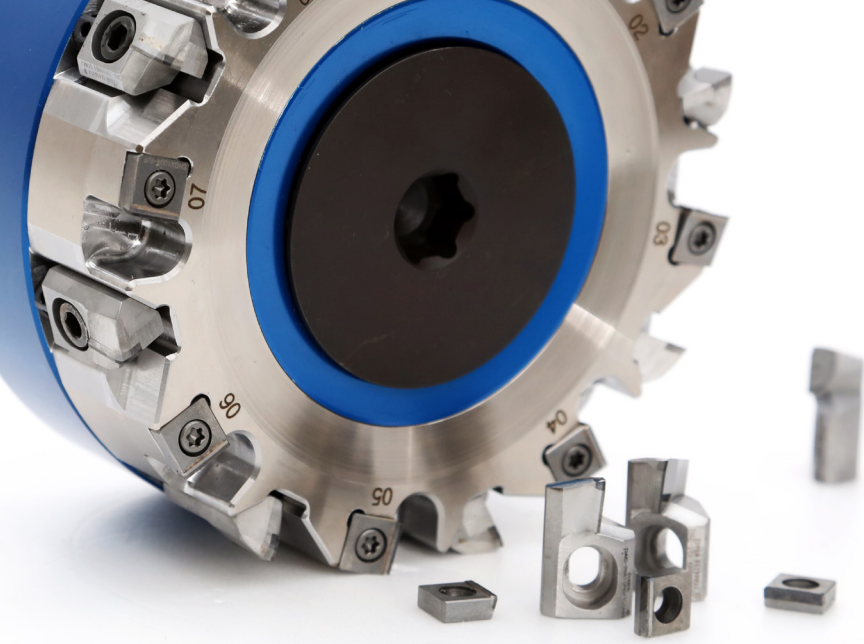
**EHWA**  
SINCE 1975

# **XF FACE MILLING CUTTERS FOR AL ALLOYS**



**NEW  
PRODUCT**

**EHWA DIAMOND**



*EHWA FACE MILLING CUTTERS*

**XF CUTTERS FOR BOTH  
ROUGHING AND FINISHING**

**NEW PRODUCT**

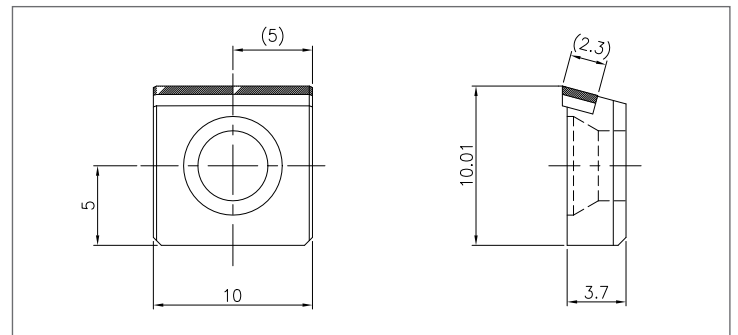
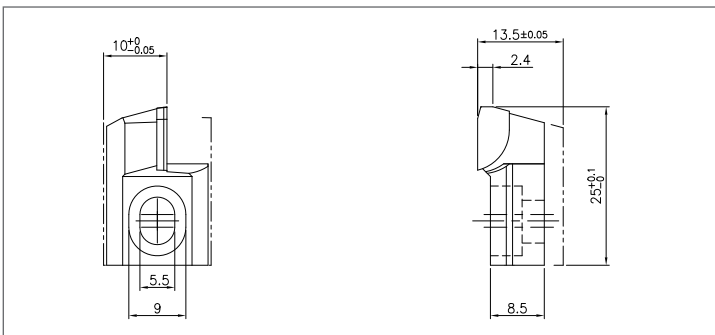


Type	Dimensions					Tooth	Insert	Cartridge	Arbor
	ØD	Ød	A	B	H				
XF 10050 -16R (L)	100	31.75	12.7	8	50	16	XF10 - SN	XF CF XF SD	FMA 31.75
XF 12563 -16R (L)	125	38.1	15.9	10	63	16			FMA 38.1
XF 16063 -16R (L)	160	50.8	19.0	11	63	16			FMA 50.8
XF 20063 -18R (L)	200	47.625	25.4	14	63	18			FMA 47.625
XF 25063 -18R (L)	250	47.625	25.4	14	63	18			FMA 47.625

(All dimensions can be customized upon customer's request)

**Maximum Cutting Condition**

ØD	Max. RPM (min <sup>-1</sup> )	Cutting Depth (mm)
100	11,000	3mm
125	9,000	3mm
160	7,000	3mm
200	5,500	3mm



**EHWA DIAMOND IND. CO. LTD.**

374, Nambudae-ro, Osan-city, Gyeonggi-Do, 18145, Korea.

http://www.ehwadia.com / e-mail: bkkim@ehwadia.co.kr / Tel : +82-(31) 370-9220 / Fax : +82-(31) 370-9840

